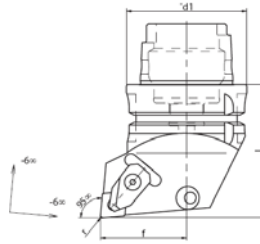




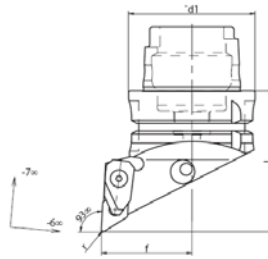
**DCLN**



CODICE	d1	l	f	r	Inserts N.
40ADCLNL/R09	40	50	27	0,8	CNM.0903
40ACCLNL/R12	40	55	27	0,8	CNM.1204
50ADCLNL/R12	50	65	35	0,8	CNM.1606
50ADCLNL/R16	50	70	35	1,2	CNM.1204
63ADCLNL/R12	63	75	45	0,8	CNM.1606
63ADCLNL/R16	63	75	45	1,2	CNM.1606
100ADCLNL/R12	100	90	65	0,8	CNM.1204
100ADCLNL/R16	100	90	65	1,2	CNM.1606



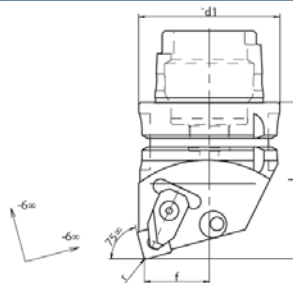
**DDJN**



CODICE	d1	l	f	r	Inserts N.
40ADDJNL/R11	40	55	27	0,8	CNM.1104
50ADDJNL/R11	50	60	35	0,8	CNM.1104
50ADDJNL/R15	50	70	35	0,8	CNM.1506
63ADDJNL/R15	63	80	45	0,8	CNM.1506
100ADDJNL/R15	100	90	65	0,8	CNM.1506



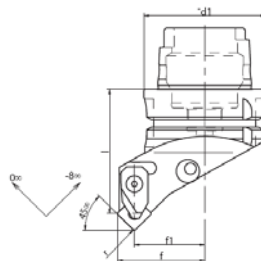
**DSBN**



CODICE	d1	l	f	r	Inserts N.
40ADSBNL/R09	40	50	19	0,8	SNM.0903
50ADSBNL/R12	50	60	23	0,8	SNM.1204
63ADSBNL/R12	63	70	29	0,8	SNM.1204
63ADSBNL/R15	63	70	29	1,2	SNM.1506
100ADSBNL/R15	100	90	46	1,2	SNM.1506



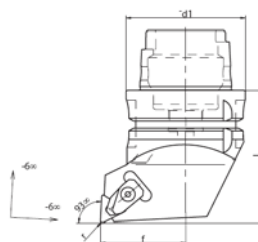
**DSSN**



CODICE	d1	l	f	F1	r	Inserts N.
40ADSSNL/R12	40	50	27	19	0,8	SNM.1204
50ADSSNL/R12	50	60	35	27	0,8	SNM.1204
63ADSSNL/R12	63	65	45	37	0,8	SNM.1204
100ADSSNL/R15	100	90	65	54	1,2	SNM.1506



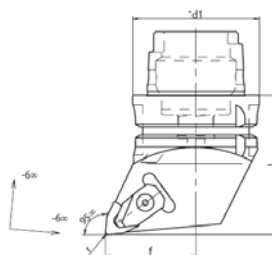
**DTJN**



CODICE	d1	l	f	r	Inserts N.
40ADTJNL/R16	40	50	27	0,8	TNM.1604
50ADTJNL/R16	50	60	35	0,8	TNM.1604
63ADTJNL/R16	63	70	45	0,8	TNM.1604
100ADTJNL/R16	100	90	65	0,8	TNM.1604



**DWLN**



CODICE	d1	l	f	r	Inserts N.
40ADWLNL/R06	40	50	27	0,8	WNM.0604
50ADWLNL/R06	50	60	35	0,8	WNM.0604
50ADWLNL/R08	50	60	35	0,8	WNM.0804
63ADWLNL/R08	63	70	45	0,8	WNM.0804
100ADWLNL/R08	100	90	65	0,8	WNM.0804





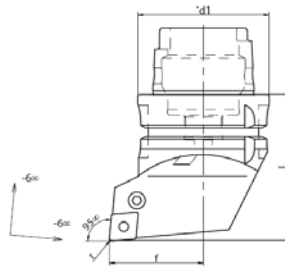
# MULTI-matic srl

www.multi-matic srl.com

## Portautensili fissi HSK DIN 69893



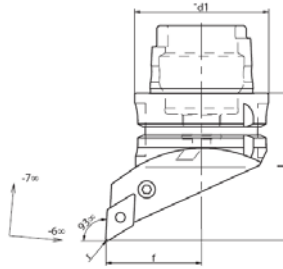
PCLN



CODICE	d1	l	f	r	Inserts N.
32CPLNL/R09	32	40	22	0,8	CNM.0903
32CPLNL/R12	32	40	22	0,8	CNM.1204
40APCLNL/R09	40	50	27	0,8	CNM.0903
40APCLNL/R12	40	50	27	0,8	CNM.1204
50APCLNL/R12	50	60	35	0,8	CNM.1204
50APCLNL/R16	50	60	35	0,8	CNM.1606
63APCLNL/R12	63	70	45	0,8	CNM.1204
63APCLNL/R16	63	70	45	0,8	CNM.1606
100APCLNL/R12	100	90	65	0,8	CNM.1204
100APCLNL/R16	100	90	65	0,8	CNM.1606



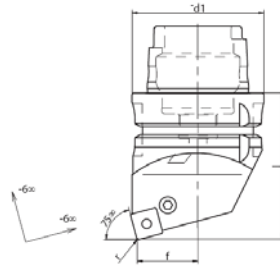
PDJN



CODICE	d1	l	f	r	Inserts N.
32CPDJNL/R11	32	40	22	0,8	DNM.1104
40APDJNL/R11	40	50	27	0,8	DNM.1104
40APDJNL/R15	40	55	27	0,8	DNM.1506
50APDJNL/R11	50	60	35	0,8	DNM.1104
50APDJNL/R15	50	70	35	0,8	DNM.1506
63APDJNL/R15	63	70	45	0,8	DNM.1506
100APDJNL/R15	100	90	65	0,8	DNM.1506



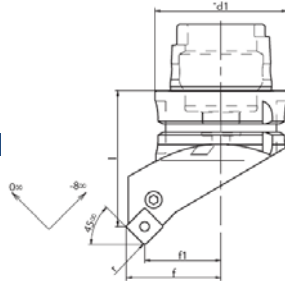
PSBN



CODICE	d1	l	f	r	Inserts N.
32CPSBNL/R09	32	35	15	0,8	SNM.0903
40APSNL/R12	40	50	19	0,8	SNM.1204
50APSNL/R12	50	60	23	0,8	SNM.1204
50APSNL/R15	50	60	23	1,2	SNM.1506
63APSNL/R12	63	70	29	0,8	SNM.1204
63APSNL/R15	63	70	29	1,2	SNM.1506
100APSNL/R15	100	90	46	1,2	SNM.1506



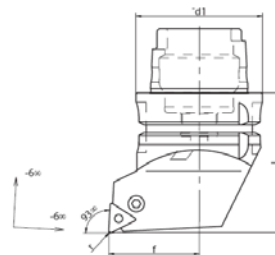
PSSN



CODICE	d1	l	f	F1	r	Inserts N.
32CPSSNL/R09	32	35	22	16	0,8	SNM.0903
40APSSNL/R12	40	45	27	19	0,8	SNM.1204
50APSSNL/R12	50	55	35	27	0,8	SNM.1204
50APSSNL/R15	50	55	35	24	1,2	SNM.1506
63APSSNL/R12	63	65	45	37	0,8	SNM.1204
63APSSNL/R15	63	65	45	34	1,2	SNM.1506
100APSSNL/R15	100	85	65	54	1,2	SNM.1506



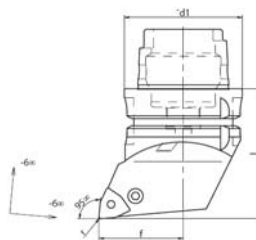
PTJN



CODICE	d1	l	f	r	Inserts N.
32CPTJNL/R16	32	40	22	0,8	TNM.1604
40APTJNL/R16	40	50	27	0,8	TNM.1604
50APTJNL/R16	50	60	35	0,8	TNM.1604
63APTJNL/R16	63	70	45	0,8	TNM.1604
100APTJNL/R16	100	90	65	0,8	TNM.1604



PWLN



CODICE	d1	l	f	r	Inserts N.
32CPWLNL/R06	32	40	22	0,8	WN.0604
40APWLNL/R06	40	50	27	0,8	WN.0604
40APWLNL/R08	40	50	27	0,8	WN.0804
50APWLNL/R06	50	60	35	0,8	WN.0604
50APWLNL/R08	50	60	35	0,8	WN.0804
63APWLNL/R08	63	70	45	0,8	WN.0804
100APWLNL/R08	100	90	65	0,8	WN.0804



# MULTI-matic srl

VIA GIOVANNI PASCOLI,4  
40036 MONZUNO BO

TEL.: +39 051 6773034

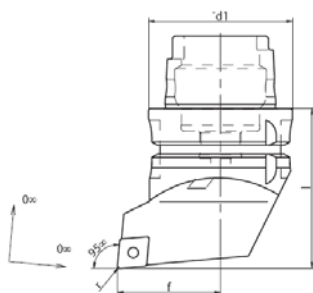
FAX.: +39 051 6771049

SITO: www.multi-matic srl.com

E-MAIL: commerciale@multi-matic srl.com



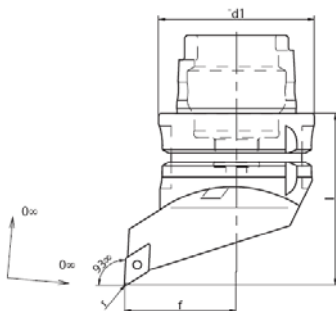
**SCLC**



CODICE	d1	l	f	r	Inserts N.
32CSCLCL/R09	32	40	22	0,8	CC.09T3
40ASCLCL/R09	40	50	27	0,8	CC.09T3
40ASCLCL/R12	40	50	27	0,8	CC.1204
50ASCLCL/R09	50	60	35	0,8	CC.09T3
50ASCLCL/R12	50	60	35	0,8	CC.1204
63ASCLCL/R12	63	70	45	0,8	CC.1204
100ASCLCL/R12	100	90	65	0,8	CC.1204



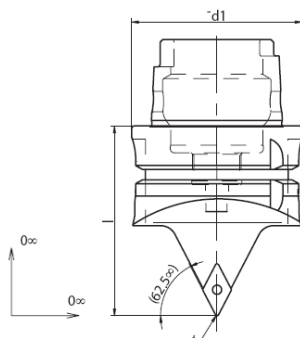
**SDJC**



CODICE	d1	l	f	r	Inserts N.
32CSDJCL/R07	32	40	22	0,4	DC.0702
40ASDJCL/R11	40	50	27	0,8	DC.11T3
50ASDJCL/R11	50	60	35	0,8	DC.11T3
63ASDJCL/R11	63	70	45	0,8	DC.11T3
100ASDJCL/R11	100	90	65	0,8	DC.11T3



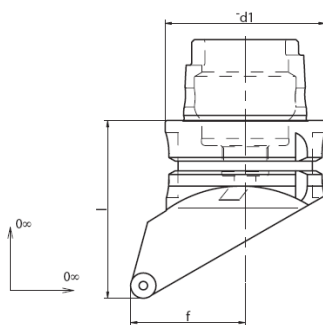
**SDNC**



CODICE	d1	l	r	Inserts N.
32CSDNCN/R07	32	40	0,4	DC.0702
40ASDNCN/R11	40	50	0,8	DC.11T3
50ASDNCN/R11	50	60	0,8	DC.11T3
63ASDNCN/R11	63	70	0,8	DC.11T3
100ASDNCN/R11	100	90	0,8	DC.11T3



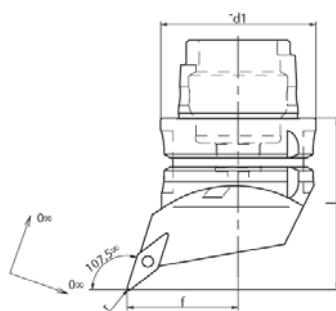
**SRGC**



CODICE	d1	l	f	Inserts N.
32CSRGC/R10	32	40	22	RC.10T3
40ASRGCL/R10	40	50	27	RC.10T3
50ASRGCL/R10	50	60	35	RC.10T3
63ASRGCL/R10	63	70	45	RC.10T3
100ASRGCL/R10	100	90	65	RC.10T3



**SVHC**



CODICE	d1	l	f	r	Inserts N.
32CSVHCL/R11	32	40	22	0,4	VC.1103
40ASVHCL/R11	40	50	27	0,4	VC.1103
40ASVHCL/R16	40	55	27	0,8	VC.1604
50ASVHCL/R11	50	60	35	0,4	VC.1103
50ASVHCL/R16	50	60	35	0,8	VC.1604
63ASVHCL/R11	63	70	45	0,4	VC.1103
63ASVHCL/R16	63	70	45	0,8	VC.1604
100ASVHCL/R16	100	90	65	0,8	VC.1604





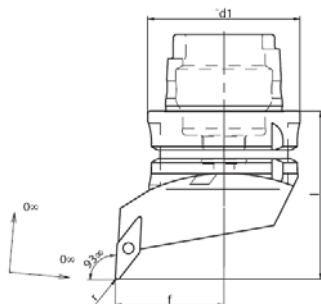
# MULTI-matic srl

www.multi-matic srl.com

## Portautensili fissi HSK DIN 69893



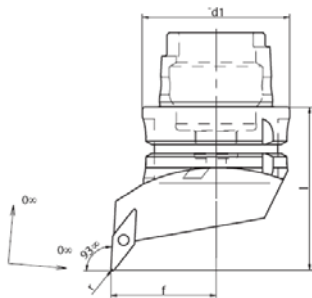
### SVJC



CODICE	d1	l	f	r	Inserts N.
32CSVJCL/R11	32	40	22	0,4	VC.1103
40ASVJCL/R11	40	50	27	0,4	VC.1103
40ASVJCL/R16	40	60	27	0,8	VC.1604
50ASVJCL/R16	50	70	35	0,8	VC.1604
63ASVJCL/R16	63	75	45	0,8	VC.1604
100ASVJCL/R16	100	90	65	0,8	VC.1604



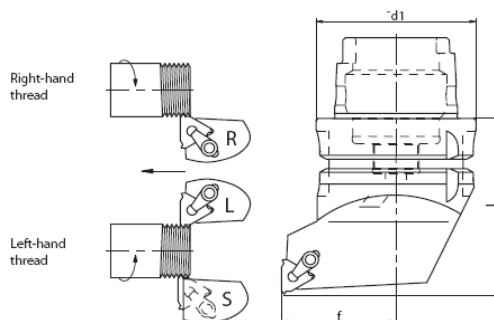
### SVJB



CODICE	d1	l	f	r	Inserts N.
32CSVJBL/R11	32	40	22	0,4	VC.1102
40ASVJBL/R11	40	50	27	0,4	VC.1102
40ASVJBL/R16	40	60	27	0,8	VC.1604
50ASVJBL/R16	50	70	35	0,8	VC.1604
63ASVJBL/R16	63	75	45	0,8	VC.1604
100ASVJBL/R16	100	90	65	0,8	VC.1604



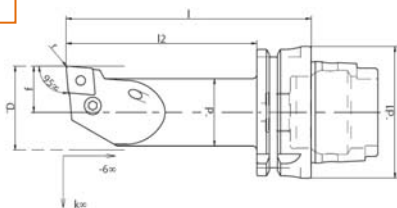
### THE



CODICE	d1	l	f	r
32CTHEL/R16	32	40	22	16EL
32CTHER/R16	32	40	22	16ER
32CTHES/R16	32	40	22	16EL
40ATHEL/R16	40	50	27	16EL
40ATHER/R16	40	50	27	16ER
40ATHES/R16	40	50	27	16EL
50ATHEL/R16	50	60	35	16EL
50ATHER/R16	50	60	35	16ER
50ATHES/R16	50	60	35	16EL
63ATHEL/R16	63	70	45	16EL
63ATHER/R16	63	70	45	16ER
63ATHES/R16	63	70	45	16EL
100ATHEL/R16	100	90	65	16EL
100ATHER/R16	100	90	65	16ER
100ATHES/R16	100	90	65	16EL



### PCLN-L



CODICE	d1	d	l	l2	f	K°	D	r
32C20PCLNL/R09	32	20	70	55	13	-12	25	0,8
32C25PCLNL/R09	32	25	85	70	17	-12	32	0,8
40A20PCLNL/R09	40	20	75	55	13	-12	25	0,8
40A25PCLNL/R12	40	25	90	70	17	-12	32	0,8
40A32PCLNL/R12	40	32	110	90	22	-10	40	0,8
50A20PCLNL/R09	50	20	85	59	13	-12	25	0,8
50A25PCLNL/R12	50	25	100	74	17	-12	32	0,8
50A32PCLNL/R12	50	32	120	94	22	-10	40	0,8
50A40PCLNL/R12	50	40	140	114	27	-10	50	0,8
63A20PCLNL/R09	63	20	85	59	13	-12	25	0,8
63A25PCLNL/R12	63	25	100	74	17	-12	32	0,8
63A32PCLNL/R12	63	32	120	94	22	-10	40	0,8
63A40PCLNL/R12	63	40	140	114	27	-10	50	0,8
63A40PCLNL/R16	63	40	140	114	27	-10	50	1,2
100A40PCLNL/R12	100	40	160	131	27	-10	50	0,8
100A50PCLNL/R16	100	50	190	161	35	-8	63	1,2



# MULTI-matic srl

VIA GIOVANNI PASCOLI,4  
40036 MONZUNO BO

TEL.: +39 051 6773034

FAX.: +39 051 6771049

SITO: www.multi-matic srl.com

E-MAIL: commerciale@multi-matic srl.com



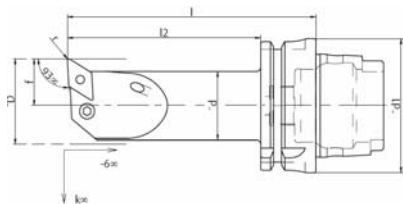
# MULTI-matic srl

www.multi-matic srl.com

## Portautensili fissi HSK DIN 69893



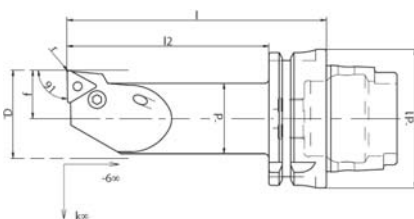
### PDUN



CODICE	d1	d	l	l2	f	K°	D	r
32C20PDUNL/R11	32	20	70	55	13	-10	25	0,8
32C25PDUNL/R11	32	25	85	70	17	-10	32	0,8
40A20PDUNL/R11	40	20	75	55	13	-10	25	0,8
40A25PDUNL/R11	40	25	90	70	17	-10	32	0,8
40A32PDUNL/R15	40	32	110	90	22	-15	40	0,8
50A20PDUNL/R11	50	20	85	59	13	-10	25	0,8
50A25PDUNL/R11	50	25	100	74	17	-10	32	0,8
50A32PDUNL/R15	50	32	120	94	22	-15	40	0,8
50A40PDUNL/R15	50	40	140	114	27	-12	50	0,8
63A20PDUNL/R11	63	20	85	59	13	-10	25	0,8
63A25PDUNL/R11	63	25	100	74	17	-10	32	0,8
63A32PDUNL/R15	63	32	120	94	22	-15	40	0,8
63A40PDUNL/R15	63	40	140	114	27	-12	50	0,8
100A40PDUNL/R15	100	40	160	131	27	-12	50	0,8
100A50PDUNL/R15	100	50	190	161	35	-8	63	0,8



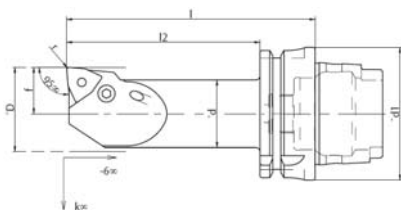
### PTFN



CODICE	d1	d	l	l2	f	K°	D	r
32C20PTFNL/R11	32	20	70	55	13	-12	25	0,4
32C25PTFNL/ER16	32	25	85	70	17	-12	32	0,8
40A20PDUNL/R11	40	20	75	55	13	-12	25	0,4
40A25PDUNL/R11	40	25	90	70	17	-12	32	0,8
40A32PTFNL/R16	40	32	110	90	22	-12	40	0,8
50A20PTFNL/R11	50	20	85	59	13	-12	25	0,4
50A25PTFNL/R16	50	25	100	74	17	-12	32	0,8
50A32PTFNL/R16	50	32	120	94	22	-12	40	0,8
50A40PTFNL/R16	50	40	140	114	27	-8	50	0,8
63A20PTFNL/R11	63	20	85	59	13	-12	25	0,4
63A25PTFNL/R16	63	25	100	74	17	-12	32	0,8
63A32PTFNL/R16	63	32	120	94	22	-12	40	0,8
63A40PTFNL/R16	63	40	140	114	27	-8	50	0,8
100A40PTFNL/R16	100	40	160	131	27	-8	50	0,8
100A50PTFNL/R16	100	50	190	161	35	-8	63	0,8



### PWLN



CODICE	d1	d	l	l2	f	K°	D	r
32C20PWLNL/R6	32	20	70	55	13	-15	25	0,8
32C25PWLNL/R6	32	25	85	70	17	-12	32	0,8
40A20PWLNL/R6	40	20	75	55	13	-15	25	0,8
40A25PWLNL/R8	40	25	90	70	17	-12	32	0,8
40A32PWLNL/R8	40	32	110	90	22	-12	40	0,8
50A20PWLNL/R6	50	20	85	59	13	-15	25	0,8
50A25PWLNL/R8	50	25	100	74	17	-12	32	0,8
50A32PWLNL/R8	50	32	120	94	22	-12	40	0,8
50A40PWLNL/R8	50	40	140	114	27	-10	50	0,8
63A20PWLNL/R6	63	20	85	59	13	-15	25	0,8
63A25PWLNL/R8	63	25	100	74	17	-12	32	0,8
63A32PWLNL/R8	63	32	120	94	22	-12	40	0,8
63A40PWLNL/R8	63	40	140	114	27	-10	50	0,8
100A40PWLNL/R8	100	40	160	131	27	-10	50	0,8
100A50PWLNL/R8	100	50	190	161	35	-8	63	0,8



# MULTI-matic srl

VIA GIOVANNI PASCOLI,4  
40036 MONZUNO BO

TEL.: +39 051 6773034

FAX.: +39 051 6771049

SITO: www.multi-matic srl.com

E-MAIL: commerciale@multi-matic srl.com



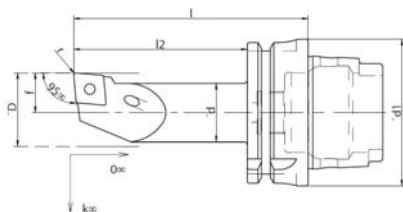
# MULTI-matic srl

www.multi-matic srl.com

## Portautensili fissi HSK DIN 69893



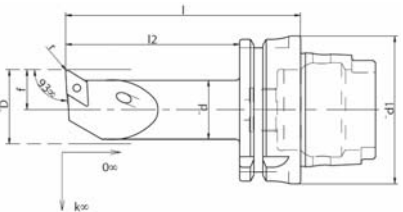
### SCLC-L



CODICE	d1	d	l	l2	f	K°	D	r
32C20SCLCL/R9	32	20	70	55	13	-8	25	0,8
32C25SCLCL/R9	32	25	85	70	17	-5	32	0,8
40A20SCLCL/R9	40	20	75	55	13	-8	25	0,8
40A25SCLCL/R12	40	25	90	70	17	-5	32	0,8
40A32SCLCL/R12	40	32	110	90	22	-5	40	0,8
50A20SCLCL/R9	50	20	85	59	13	-8	25	0,8
50A25SCLCL/R12	50	25	100	74	17	-5	32	0,8
50A32SCLCL/R12	50	32	120	94	22	-5	40	0,8
50A40SCLCL/R12	50	40	140	114	27	-5	50	0,8
63A20SCLCL/R9	63	20	85	59	13	-8	25	0,8
63A25SCLCL/R12	63	25	100	74	17	-5	32	0,8
63A32SCLCL/R12	63	32	120	94	22	-5	40	0,8
63A40SCLCL/R12	63	40	140	114	27	-5	50	0,8
100A40SCLCL/R12	100	40	160	131	27	-5	50	0,8
100A50SCLCL/R12	100	50	190	161	35	-5	63	0,8



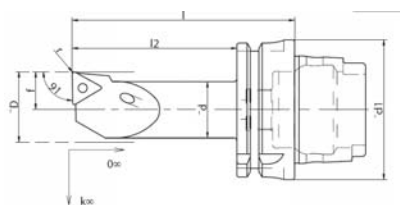
### SDUC



CODICE	d1	d	l	l2	f	K°	D	r
32C20SDUCL/R11	32	20	70	55	13	-8	25	0,8
32C25SDUCL/R11	32	25	85	70	17	-5	32	0,8
40A20SDUCL/R11	40	20	75	55	13	-8	25	0,8
40A25SDUCL/R11	40	25	90	70	17	-5	32	0,8
40A32SDUCL/R11	40	32	110	90	22	-5	40	0,8
50A20SDUCL/R11	50	20	85	59	13	-8	25	0,8
50A25SDUCL/R11	50	25	100	74	17	-5	32	0,8
50A32SDUCL/R11	50	32	120	94	22	-5	40	0,8
63A20SDUCL/R11	63	20	85	59	13	-8	25	0,8
63A25SDUCL/R11	63	25	100	74	17	-5	32	0,8
63A32SDUCL/R11	63	32	120	94	22	-5	40	0,8
100A40SDUCL/R11	100	40	160	131	27	-5	50	0,8
100A50SDUCL/R11	100	50	190	161	35	-3	63	0,8



### STFC



CODICE	d1	d	l	l2	f	K°	D	r
32C20STFCL/R11	32	20	70	55	13	-8	25	0,8
32C25STFCL/R16	32	25	85	70	17	-5	32	0,8
40A20STFCL/R11	40	20	75	55	13	-8	25	0,8
40A25STFCL/R16	40	25	90	70	17	-5	32	0,8
40A32STFCL/R16	40	32	110	90	22	-5	40	0,8
50A20STFCL/R11	50	20	85	59	13	-8	25	0,8
50A25STFCL/R16	50	25	100	74	17	-5	32	0,8
50A32STFCL/R16	50	32	120	94	22	-5	40	0,8
50A40STFCL/R16	50	40	140	114	27	-5	50	0,8
63A20STFCL/R11	63	20	85	59	13	-8	25	0,8
63A25STFCL/R16	63	25	100	74	17	-5	32	0,8
63A32STFCL/R16	63	32	120	94	22	-5	40	0,8
63A40STFCL/R16	63	40	140	114	27	-5	50	0,8
100A40STFCL/R16	100	40	160	131	27	-5	50	0,8
100A50STFCL/R16	100	50	190	161	35	-5	63	0,8



# MULTI-matic srl

VIA GIOVANNI PASCOLI,4  
40036 MONZUNO BO

TEL.: +39 051 6773034

FAX.: +39 051 6771049

SITO: www.multi-matic srl.com

E-MAIL: commerciale@multi-matic srl.com



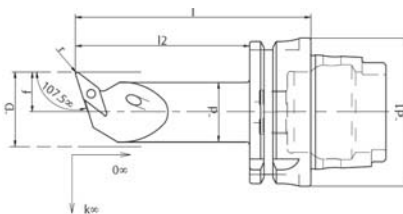
# MULTI-matic srl

www.multi-maticsr.com

## Portautensili fissi HSK DIN 69893



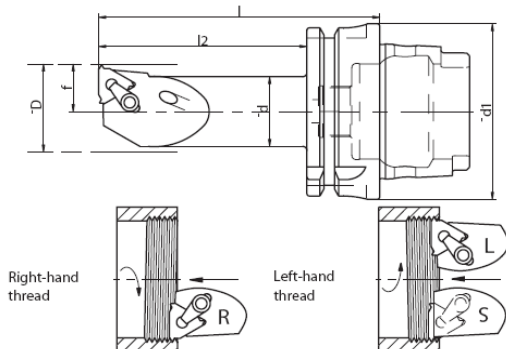
### SVQB



CODICE	d1	d	l	l2	f	K°	D	r
32C20SVQBL/R11	32	20	70	55	13	-8	25	0,4
32C25SVQBL/R11	32	25	85	70	17	-5	32	0,4
40A20SVQBL/R11	40	20	75	55	13	-8	25	0,4
40A25SVQBL/R11	40	25	90	70	17	-5	32	0,4
40A32SVQBL/R16	40	32	110	90	22	-10	40	0,8
50A20SVQBL/R11	50	20	85	59	13	-8	25	0,4
50A25SVQBL/R11	50	25	100	74	17	-5	32	0,4
50A32SVQBL/R16	50	32	120	94	22	-10	40	0,8
50A40SVQBL/R16	50	40	140	114	27	-10	50	0,8
63A20SVQBL/R11	63	20	85	59	13	-8	25	0,4
63A25SVQBL/R11	63	25	100	74	17	-5	32	0,4
63A32SVQBL/R16	63	32	120	94	22	-10	40	0,8
63A40SVQBL/R16	63	40	140	114	27	-10	50	0,8
100A40SVQBL/R16	100	40	160	131	27	-10	50	0,8
100A50SVQBL/R16	100	50	190	161	35	-8	63	0,8



### THE-L



CODICE	d1	d	l	l2	f	D	r
32C20THEL16	32	20	65	50	13	25	16IL
32C20THER16	32	20	65	50	13	25	16IR
32C20THES16	32	20	65	50	13	25	16L
32C25THEL16	32	25	80	65	17	32	16L
32C25THER16	32	25	80	65	17	32	16R
32C25THES16	32	25	80	65	17	32	16L
40A20THEL16	40	20	75	55	13	25	16L
40A20THER16	40	20	75	55	13	25	16R
40A20THES16	40	20	75	55	13	25	16L
40A25THEL16	40	25	90	70	17	32	16L
40A25THER16	40	25	90	70	17	32	16R
40A25THES16	40	25	90	70	17	32	16L
40A32THEL16	40	32	110	90	22	40	16L
40A32THER16	40	32	110	90	22	40	16R
40A32THES16	40	32	110	90	22	40	16L
50A20THEL16	50	20	85	59	13	25	16L
50A20THER16	50	20	85	59	13	25	16R
50A20THES16	50	20	85	59	13	25	16L
50A25THEL16	50	25	100	74	17	32	16L
50A25THER16	50	25	100	74	17	32	16R
50A25THES16	50	25	100	74	17	32	16L
50A32THEL16	50	32	120	94	22	40	16L
50A32THER16	50	32	120	94	22	40	16R
50A32THES16	50	32	120	94	22	40	16L
50A40THEL16	50	40	140	114	27	50	16L
50A40THER16	50	40	140	114	27	50	16R
50A40THES16	50	40	140	114	27	50	16L
63A20THEL16	63	20	85	59	13	25	16L
63A20THER16	63	20	85	59	13	25	16R
63A20THES16	63	20	85	59	13	25	16L
63A25THEL16	63	25	100	74	17	32	16L
63A25THER16	63	25	100	74	17	32	16R
63A25THES16	63	25	100	74	17	32	16L
63A32THEL16	63	32	120	94	22	40	16L
63A32THER16	63	32	120	94	22	40	16R
63A32THES16	63	32	120	94	22	40	16L
63A40THEL16	63	40	140	114	27	50	16L
63A40THER16	63	40	140	114	27	50	16R
63A40THES16	63	40	140	114	27	50	16L
100A40THEL16	100	40	160	131	27	50	16L
100A40THER16	100	40	160	131	27	50	16R
100A40THES16	100	40	160	131	27	50	16L



# MULTI-matic srl

VIA GIOVANNI PASCOLI,4  
40036 MONZUNO BO

TEL.: +39 051 6773034

FAX.: +39 051 6771049

SITO: www.multi-maticsr.com

E-MAIL: commerciale@multi-maticsr.com



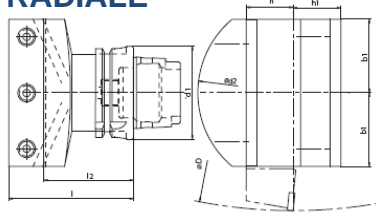
# MULTI-matic srl

www.multi-maticsr.com

## Portautensili fissi HSK DIN 69893



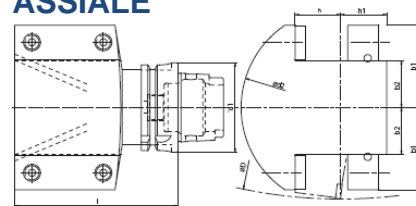
### PORTAUTENSILE RADIALE



CODICE	d1	d2	D	b1	h	h1	l	l2
63ARAD32/35	63	130	340	50	32/35	32,5	85	50



### PORTAUTENSILE ASSIALE

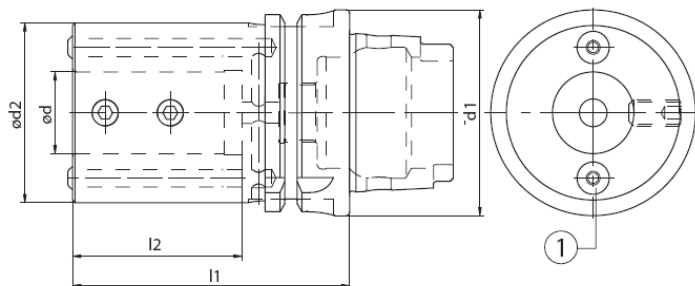


CODICE	d1	d2	D	b1	h	h1	l	l2
63ARAD32/35	63	130	340	50	32/35	32,5	85	50



### PORTABARENO

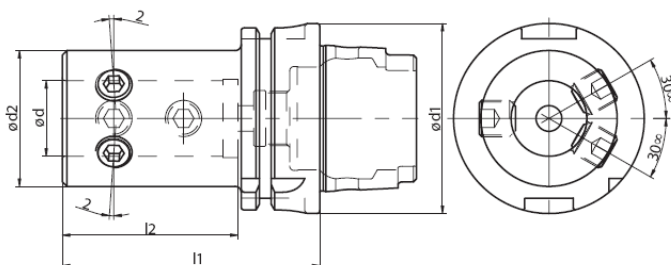
### ASSIALE



CODICE	d1	d	d2	l1	l2
32CAX-E2x08	32	8	32	45	30
32CAX-E2x10	32	10	34	45	30
32CAX-E2x12	32	12	36	45	30
32CAX-E2x16	32	16	40	50	35
40AAX-E2x08	40	8	32	60	37
40AAX-E2x10	40	10	34	60	37
40AAX-E2x12	40	12	36	65	40
40AAX-E2x16	40	16	40	70	42
40AAX-E2x20	40	20	45	70	42
50AAX-E2x10	50	10	38	75	45
50AAX-E2x12	50	12	40	75	45
50AAX-E2x16	50	16	45	80	50
50AAX-E2x20	50	20	50	80	47
50AAX-E2x25	50	25	55	85	50
63AAX-E2x08	63	8	32	70	40
63AAX-E2x10	63	10	38	75	45
63AAX-E2x12	63	12	40	75	45
63AAX-E2x16	63	16	45	80	50
63AAX-E2x20	63	20	50	80	50
63AAX-E2x25	63	25	55	85	52
63AAX-E2x32	63	32	72	95	58
63AAX-E2x40	63	40	80	120	72
100AAX-E2x16	100	16	45	85	48
100AAX-E2x20	100	20	50	85	48
100AAX-E2x25	100	25	55	85	48
100AAX-E2x32	100	32	72	95	58
100AAX-E2x40	100	40	80	110	73
100AAX-E2x50	100	50	90	120	82



### PORTAPUNTE AD INSERTI ASSIALE CON PASSAGGIO LIQUIDO REF.INTERNO



CODICE	d1	d	d2	l1	l2
32CAX-E1x16	32	16	36	65	54
40AAX-E1x16	40	16	36	75	54
40AAX-E1x20	40	20	40	75	54
50AAX-E1x16	50	16	36	80	54
50AAX-E1x20	50	20	40	80	54
50AAX-E1x25	50	25	45	85	59
63AAX-E1x16	63	16	36	80	54
63AAX-E1x20	63	20	40	80	54
63AAX-E1x25	63	25	45	85	59
63AAX-E1x32	63	32	52	90	63
63AAX-E1x40	63	40	65	100	73
100AAX-E1x16	100	16	36	85	54
100AAX-E1x20	100	20	40	85	54
100AAX-E1x25	100	25	45	90	59
100AAX-E1x32	100	32	52	95	63
100AAX-E1x40	100	40	65	105	73



# MULTI-matic srl

VIA GIOVANNI PASCOLI,4  
40036 MONZUNO BO

TEL.: +39 051 6773034

FAX.: +39 051 6771049

SITO:www.multi-maticsr.com

E-MAIL: commerciale@multi-maticsr.com



**MULTI-matic srl**

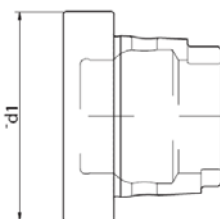
www.multi-matic srl.com

# Portautensili fissi HSK DIN 69893



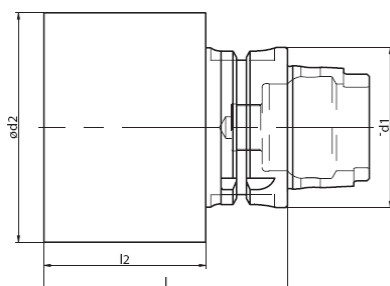
**TAPPO DI PROTEZIONE**

CODICE	d1
H32ATP	32
H40ATP	40
H50ATP	50
H63ATP	63



**SEMILAVORATI PER  
UTENSILI SPECIALI**

CODICE	d1	d2	l	l2
	32	40	110	98
	32	50	125	113
	32	70	65	53
	32	90	75	63
	40	40	95	71
	40	60	160	136
	40	80	75	51
	40	100	85	61
	50	50	125	94
	50	75	170	139
	50	90	80	46
	50	110	90	59
	63	80	190	158
	63	110	85	53
	63	130	95	63



**MULTI-matic srl**

VIA GIOVANNI PASCOLI,4  
40036 MONZUNO BO

TEL.: +39 051 6773034

FAX.: +39 051 6771049

SITO: www.multi-matic srl.com

E-MAIL: commerciale@multi-matic srl.com