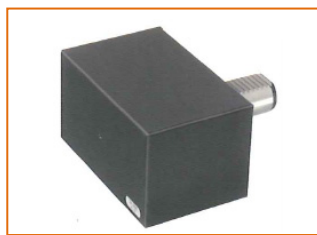
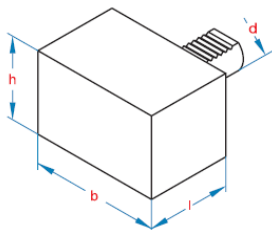




### PORTAUTENSILE SEMILAVORATO RETTANGOLARE



A1

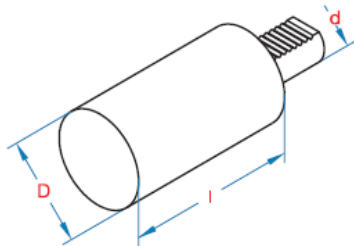


CODICE	d	b	h	l
A1-16x44	16	78	44	44
A1-20x65	20	100	60	65
A1-25x75	25	100	60	75
A1-30x85	30	130	76	85
A1-40x100	40	151	96	100
A1-50x125	50	160	120	125
A1-60x160	60	165	125	160

### PORTAUTENSILE SEMILAVORATO ROTONDO



A2

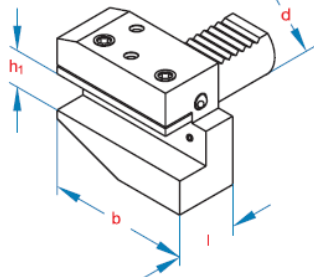


CODICE	d	D	l
A2-16x60	16	40	60
A2-20x70	20	50	70
A2-25x80	25	58	80
A2-25x200	25	58	200
A2-30x100	30	68	100
A2-30x240	30	68	240
A2-40x120	40	83	120
A2-40x320	40	83	320
A2-50x135	50	98	135
A2-50x400	50	98	400
A2-60x150	60	123	150
A2-60x480	60	123	480

### PORTAUTENSILE CON SEDE TRASVERSALE – DESTRO CORTO



B1

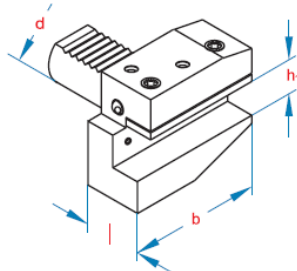


CODICE	d	h1	l	b
B1-16x12x24	16	12	24	42
B1-16x12x34	16	12	34	42
B1-20x16x30	20	16	30	55
B1-20x16x40	20	16	40	55
B1-25x16x30	25	16	30	55
B1-25x16x40	25	16	40	55
B1-30x20x40	30	20	40	70
B1-30x20x60	30	20	60	70
B1-40x25x44	40	25	44	85
B1-50x32x55	50	32	55	100
B1-60x32x60	60	32	60	125

### PORTAUTENSILE CON SEDE TRASVERSALE – SINISTRO CORTO



B2

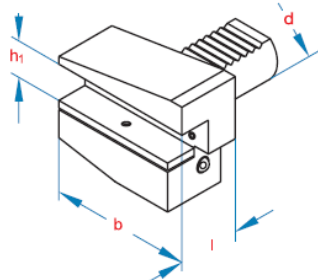


CODICE	d	h1	l	b
B2-16x12x24	16	12	24	42
B2-16x12x34	16	12	34	42
B2-20x16x30	20	16	30	55
B2-20x16x40	20	16	40	55
B2-25x16x30	25	16	30	55
B2-25x16x40	25	16	40	55
B2-30x20x40	30	20	40	70
B2-30x20x60	30	20	60	70
B2-40x25x44	40	25	44	85
B2-50x32x55	50	32	55	100
B2-60x32x60	60	32	60	125

### PORTAUTENSILE TRASVERSALE - ROVESCiato DESTRO CORTO



B3



CODICE	d	D	l
B1-16x12x24	16	40	60
B1-16x12x34	20	50	70
B1-20x16x30	25	58	80
B1-20x16x40	25	58	200
B1-25x16x30	30	68	100
B1-25x16x40	30	68	240
B1-30x20x40	40	83	120
B1-30x20x60	40	83	320
B1-40x25x44	50	98	135
B1-50x32x55	50	98	400
B1-60x32x60	60	123	150

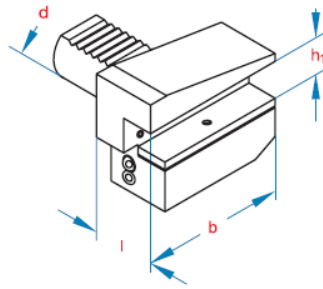




### PORTAUTENSILE TRASVERSALE - ROVESCIO SINISTRO CORTO



**B4**

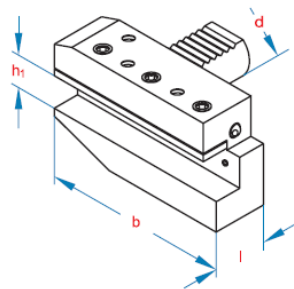


CODICE	d	h1	l	l
B4-16x12x24	16	12	24	42
B4-16x12x34	16	12	34	42
B4-20x16x30	20	16	30	55
B4-20x16x40	20	16	40	55
B4-25x16x30	25	16	30	55
B4-25x16x40	25	16	40	55
B4-30x20x40	30	20	40	70
B4-30x20x60	30	20	60	70
B4-40x25x44	40	25	44	85
B4-50x32x55	50	32	55	100
B4-60x32x60	60	32	60	125

### PORTAUTENSILE TRASVERSALE - DESTRO LUNGO



**B5**

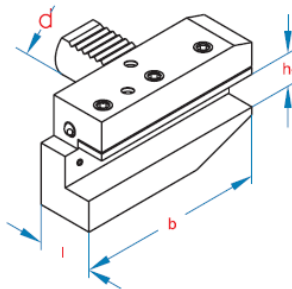


CODICE	d	h1	l	l
B5-16x12x24	16	12	24	58
B5-16x12x34	16	12	34	58
B5-20x16x30	20	16	30	75
B5-20x16x40	20	16	40	75
B5-25x16x30	25	16	30	75
B5-25x16x40	25	16	40	75
B5-30x20x40	30	20	40	100
B5-30x20x60	30	20	60	100
B5-40x25x44	40	25	44	118
B5-50x32x55	50	32	55	130
B5-60x32x60	60	32	60	145

### PORTAUTENSILE TRASVERSALE - SINISTRO LUNGO



**B6**

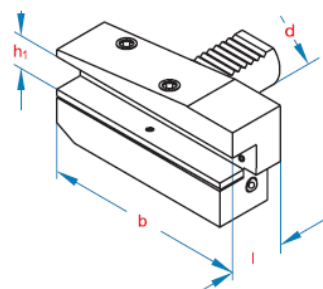


CODICE	d	h1	l	b
B6-16x12x24	16	12	24	58
B6-16x12x34	16	12	34	58
B6-20x16x30	20	16	30	75
B6-20x16x40	20	16	40	75
B6-25x16x30	25	16	30	75
B6-25x16x40	25	16	40	75
B6-30x20x40	30	20	40	100
B6-30x20x60	30	20	60	100
B6-40x25x44	40	25	44	118
B6-50x32x55	50	32	55	130
B6-60x32x60	60	32	60	145

### PORTAUTENSILE TRASVERSALE - ROVOSCIO DESTRO LUNGO



**B7**

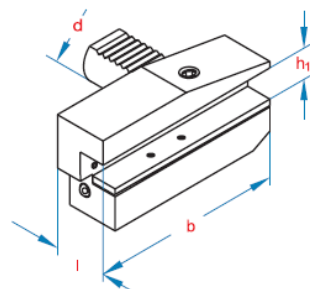


CODICE	d	h1	l	b
B7-16x12x24	16	12	24	58
B7-16x12x34	16	12	34	58
B7-20x16x30	20	16	30	75
B7-20x16x40	20	16	40	75
B7-25x16x30	25	16	30	75
B7-25x16x40	25	16	40	75
B7-30x20x40	30	20	40	100
B7-30x20x60	30	20	60	100
B7-40x25x44	40	25	44	118
B7-50x32x55	50	32	55	130
B7-60x32x60	60	32	60	145

### PORTAUTENSILE TRASVERSALE - ROVOSCIO SINISTRO LUNGO



**B8**



CODICE	d	h1	l	b
B8-16x12x24	16	12	24	58
B8-16x12x34	16	12	34	58
B8-20x16x30	20	16	30	75
B8-20x16x40	20	16	40	75
B8-25x16x30	25	16	30	75
B8-25x16x40	25	16	40	75
B8-30x20x40	30	20	40	100
B8-30x20x60	30	20	60	100
B8-40x25x44	40	25	44	118
B8-50x32x55	50	32	55	130
B8-60x32x60	60	32	60	145

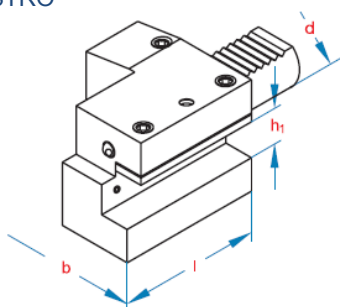




## PORTAUTENSILE LONGITUDINALE - DESTRO



C1

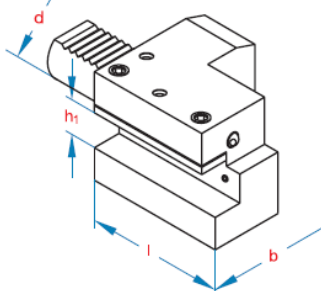


CODICE	d	h1	l	l
C1-16x12	16	12	44	43
C1-20x16	20	16	50	65
C1-25x16	25	16	55	58
C1-30x20	30	20	70	70
C1-40x25	40	25	85	85
C1-50x32	50	32	100	100
C1-60x32	60	32	125	125

## PORTAUTENSILE LONGITUDINALE - SINISTRO



C2

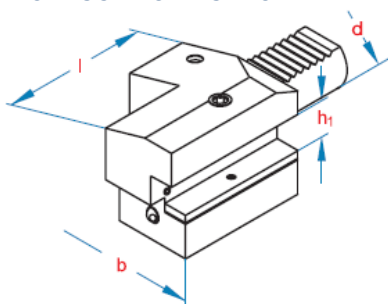


CODICE	d	h1	l	l
C2-16x20	16	12	44	43
C2-20x16	20	16	50	65
C2-25x16	25	16	55	58
C2-30x20	30	20	70	76
C2-40x25	40	25	85	90
C2-50x32	50	32	100	105
C2-60x32	60	32	125	125

## PORTAUTENSILE LONGITUDINALE - ROVESCiato DESTRO



C3

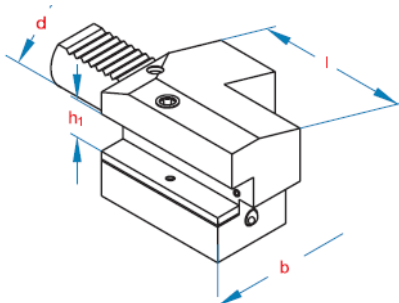


CODICE	d	h1	l	b
C3-16x12	16	12	44	43
C3-20x16	20	16	50	65
C3-25x16	25	16	55	58
C3-30x20	30	20	70	70
C3-40x25	40	25	85	85
C3-50x32	50	32	100	100
C3-60x32	60	32	125	125

## PORTAUTENSILE LONGITUDINALE - ROVESCiato SINISTRO



C4

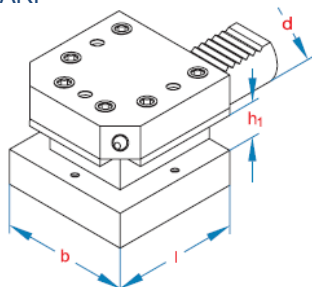


CODICE	d	h1	l	b
C4-16x12	16	12	24	58
C4-20x16	16	12	34	58
C4-25x16	20	16	30	75
C4-30x20	20	16	40	75
C4-40x25	25	16	30	75
C4-50x32	25	16	40	75
C4-60x32	30	20	40	100

## PORTAUTENSILE A PIU' SEDI RETTANGOLARI



D1



CODICE	d	h1	l	b
D1-25x16	25	16	48	66
D1-30x20	30	20	60	76
D1-40x25	40	25	72	90
D1-50x32	50	32	85	105
D1-60x32	60	32	110	115





# MULTI-matic srl

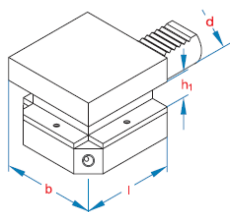
www.multi-matic srl.com

## Portautensili fissi DIN 69880

### PORTAUTENSILE A PIU' SEDI RETTANGOLARI - ROVESCIATO



D2

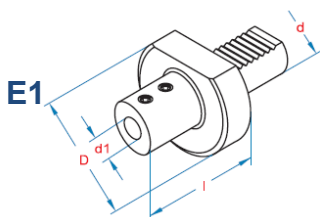


CODICE	d	h1	l	b
D2-25x16	25	16	48	66
D2-30x20	30	20	60	76
D2-40x25	40	25	72	90
D2-50x32	50	32	85	105
D2-60x32	60	32	110	115

### PORTAPUNTE AD INSERTI CON PASSAGGIO LIQUIDO REFRIGERANTE INTERNO



E1

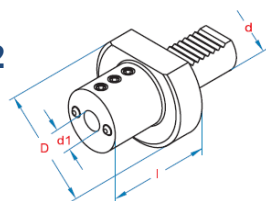


CODICE	d	d1	D	l	CODICE	d	d1	D	l
E1-20x16	20	16	50	67	E1-40x32	40	32	83	75
E1-20x20	20	20	50	67	E1-40x40	40	40	83	90
E1-20x25	20	25	50	71	E1-50x20	50	20	98	67
E1-25x20	25	20	58	67	E1-50x25	50	25	98	80
E1-25x25	25	25	58	71	E1-50x32	50	32	98	80
E1-30x16	30	16	68	66	E1-50x40	50	40	98	90
E1-30x20	30	20	68	67	E1-50x50	50	50	98	100
E1-30x25	30	25	68	71	E1-60x20	60	20	123	80
E1-30x32	30	32	68	75	E1-60x25	60	25	123	80
E1-40x16	40	16	83	66	E1-60x32	60	32	123	80
E1-40x20	40	20	83	67	E1-60x40	60	40	123	90
E1-40x25	40	25	83	75	E1-60x50	60	50	123	100

### PORTABARENI



E2

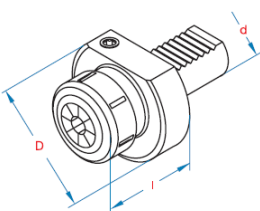


CODICE	d	d1	D	l	CODICE	d	d1	D	l
E2-16x06	16	6	40	44	E2-30x32	30	32	68	75
E2-16x08	16	8	40	44	E2-40x08	40	8	83	75
E2-16x10	16	10	40	44	E2-40x10	40	10	83	75
E2-16x12	16	12	40	44	E2-40x12	40	12	83	75
E2-16x16	16	16	40	44	E2-40x16	40	13	83	75
E2-20x08	20	8	50	50	E2-40x20	40	20	83	75
E2-20x10	20	10	50	50	E2-40x25	40	25	83	75
E2-20x12	20	12	50	50	E2-40x32	40	32	83	75
E2-20x16	20	16	50	50	E2-40x40	40	40	83	90
E2-20x20	20	20	50	50	E2-50x12	50	12	98	90
E2-20x25	20	25	50	60	E2-50x16	50	16	98	90
E2-25x08	25	8	58	50	E2-50x20	50	20	98	90
E2-25x10	25	10	58	50	E2-50x25	50	25	98	90
E2-25x12	25	12	58	50	E2-50x32	50	32	98	90
E2-25x16	25	16	58	50	E2-50x40	50	40	98	90
E2-25x20	25	20	58	50	E2-60x12	60	12	123	90
E2-25x25	25	25	58	60	E2-60x16	60	16	123	90
E2-30x08	30	8	68	60	E2-60x20	60	20	123	90
E2-30x10	30	10	68	60	E2-60x25	60	25	123	90
E2-30x12	30	12	68	60	E2-60x30	60	30	123	90
E2-30x16	30	16	68	60	E2-60x32	60	32	123	90
E2-30x20	30	20	68	60	E2-60x40	60	40	123	90
E2-30x25	30	25	68	60	E2-60x50	60	50	123	100

### PORTAPINZA PER PINZE DIN6388



E3



CODICE	d	D	COLLET	l	CODICE	d	D	COLLET	l
E3-16x16	16	40	2-16	57	E3-40x16	40	83	2-16	57
E3-20x16	20	50	2-16	57	E3-40x25	40	83	2-25	75
E3-20x20	20	50	2-20	62	E3-40x32	40	83	4-32	90
E3-25x16	25	58	2-16	57	E3-50x25	50	98	2-25	75
E3-25x20	25	58	2-20	62	E3-50x32	50	98	4-32	90
E3-30x16	30	68	2-16	57	E3-60x25	60	123	2-25	75
E3-30x25	30	68	2-25	75	E3-60x32	60	123	4-32	90



# MULTI-matic srl

VIA GIOVANNI PASCOLI,4  
40036 MONZUNO BO

TEL.: +39 051 6773034

FAX.: +39 051 6771049

SITO: www.multi-matic srl.com

E-MAIL: commerciale@multi-matic srl.com

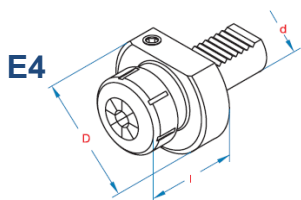


# MULTI-matic srl

www.multi-matic srl.com

## Portautensili fissi DIN 69880

### PORTAPINZA PER PINZE DIN6488/B TIPO "ER"

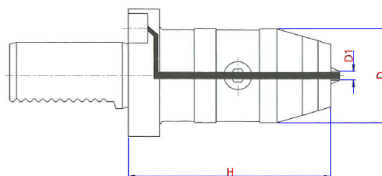


CODICE	d	D	COLLET	I	CODICE	d	D	COLLET	I
E4-16x16	16	40	1-10	40	E4-30x25	30	68	1-16	74
E4-16x20	16	40	1-13	44	E4-30x32	30	68	2-20	74
E4-20x16	20	50	1-10	40	E4-30x40	30	68	2-25	74
E4-20x20	20	50	1-13	50	E4-40x25	40	83	1-16	70
E4-20x25	20	50	1-16	54	E4-40x32	40	83	2-20	84
E4-20x32	20	50	2-20	55	E4-40x40	40	83	2-25	75
E4-25x25	25	58	1-16	57	E4-50x32	50	98	2-20	84
E4-25x32	25	58	2-20	62	E4-50x40	50	98	2-25	90
E4-30x20	30	68	1-13	57	E4-60x40	60	123	2-25	75

### PORTAPINZA CON REFRIGERANTE AL CENTRO

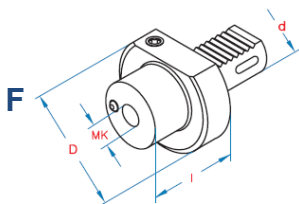


KS1



CODICE	D	H	D1
KS1-30-13	50	90	13
KS1-30-16	50	90	16
KS1-40-13	50	90	13
KS1-40-16	50	90	16
KS1-50-13	50	90	13
KS1-50-16	50	90	16

### PORTAUTENSILE CON USCITA CONO MORSE

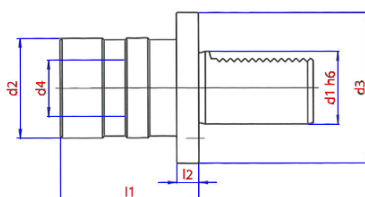


CODICE	d	MK	D	I	CODICE	d	MK	D	I
F-20-1	20	1	50	22	F-40-3	40	3	83	50
F-20-2	20	2	50	90	F-40-4	40	4	83	80
F-25-1	25	1	58	22	F-50-2	50	2	98	36
F-25-2	25	2	58	46	F-50-3	50	3	98	45
F-30-1	30	1	68	27	F-50-4	50	4	98	55
F-30-2	30	2	68	36	F-50-5	50	5	98	168
F-30-3	30	3	68	66	F-60-3	60	3	123	36
F-40-1	40	1	83	36	F-60-4	60	4	123	50
F-40-2	40	2	83	36	F-60-5	60	5	132	81

### MASCHIATORE A DOPPIA COMPENSAZIONE



M



CODICE	d1	l1	d2	d4
M2710	20	55	38	19
M2715	25	55	38	19
M2720	30	55	38	19
M2730	40	55	38	19
M2810	20	77	55	31
M2815	25	77	55	31
M2820	30	77	55	31
M2830	40	77	55	31
M2930	40	110	79	48
M2940	50	110	79	48



# MULTI-matic srl

VIA GIOVANNI PASCOLI,4  
40036 MONZUNO BO

TEL.: +39 051 6773034

FAX.: +39 051 6771049

SITO: www.multi-matic srl.com

E-MAIL: commerciale@multi-matic srl.com



# MULTI-matic srl

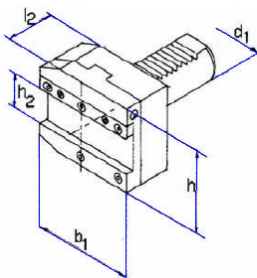
www.multi-matic srl.com

## Portautensili fissi DIN 69880

### LAMA DA TAGLIO - DESTRO



AR

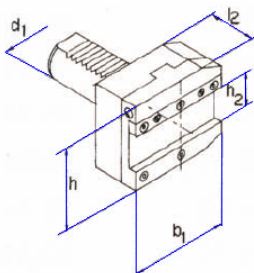


CODICE	B1	H	L2	H2
3026	70	71	50	26
4026	85	84,5	50	26
4032	85	84,5	50	32
5026	100	89	50	26
5032	100	89	50	32

### LAMA DA TAGLIO - SINISTRO



AL

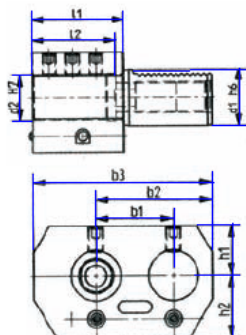


CODICE	B1	H	L2	H2
3026	70	71	50	26
4026	85	84,5	50	26
4032	85	84,5	50	32
5026	100	89	50	26
5032	100	89	50	32

### PORTABARENO DOPPI O - DESTRO



E7

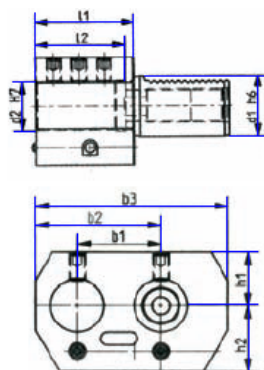


CODICE	D1	D2	H1	H2	L1	L2	B1	B2	B3
E7-20x16	20	16	25	25	45	42	32	51	76
E7-20x20	20	20	25	25	45	42	32	51	76
E7-30x25	30	25	28	32	56	52	45	65	95
E7-40x32	40	32	32,5	40	66	60	50	75	115
E7-50x32	50	32	32,5	47,5	66	60	50	75	115
E7-50x50	50	50	35	49	90	80	68	103	152

### PORTABARENO DOPPI O - SINISTRO



E8



CODICE	D1	D2	H1	H2	L1	L2	B1	B2	B3
E8-20x16	20	16	25	25	45	42	32	51	76
E8-20x20	20	20	25	25	45	42	32	51	76
E8-30x25	30	25	28	32	56	52	45	65	95
E8-40x32	40	32	32,5	40	66	60	50	75	115
E8-50x32	50	32	32,5	47,5	66	60	50	75	115
E8-50x50	50	50	35	49	90	80	68	103	152



# MULTI-matic srl

VIA GIOVANNI PASCOLI,4  
40036 MONZUNO BO

TEL.: +39 051 6773034

FAX.: +39 051 6771049

SITO: www.multi-matic srl.com

E-MAIL: commerciale@multi-matic srl.com