

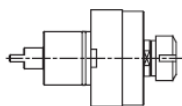
MORI SEIKI
THE MACHINE TOOL COMPANY

MORI SEIKI

NL1500/2000
NL2500/3000

MS.000.NLA

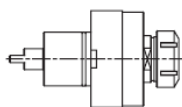
AXIAL



ER-32
RATIO 1:1
6.000 RPM MAX.

MS.000.NLB

AXIAL

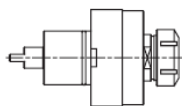


ER-40
RATIO 1:1
6.000 RPM MAX.



MS.005.NL

**AXIAL WITH
HIGH PRESSURE
COOLANT THROUGH**

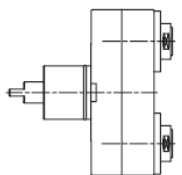


ER-40
RATIO 1:1
6.000 RPM MAX.
10 bar MAX.



MS.023.NL

**AXIAL DOUBLE
OUTPUT**

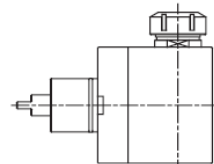


ER-25A
RATIO 1:1
4.000 RPM MAX.



MS.010.NL

RADIAL

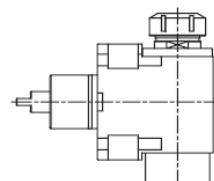


ER-40
RATIO 1:1
6.000 RPM MAX.



MS.016.NL

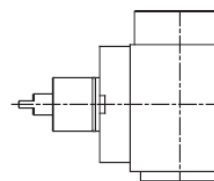
**RADIAL WITH
HIGH PRESSURE
COOLANT THROUGH**



ER-40
RATIO 1:1
6.000 RPM MAX.
70 bar MAX.

MS.016.NLC4

**RADIAL CAPTO C4
HIGH PRESSURE
COOLANT THROUGH**



CAPTO C4
RATIO 1:1
6.000 RPM MAX.
70 bar MAX.

SPECIALS: NO PROBLEM



MULTI-matic srl

VIA GIOVANNI PASCOLI,4
40036 MONZUNO BO

TEL.: +39 051 6773034
FAX.: +39 051 6771049

SITO: www.multi-maticsr.com

E-MAIL: commerciale@multi-maticsr.com

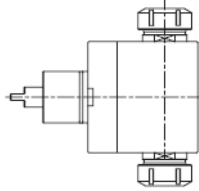
MORI SEIKI
THE MACHINE TOOL COMPANY

MORI SEIKI

NL1500/2000
NL2500/3000

MS.008.NL

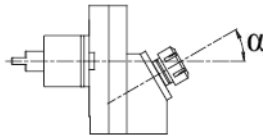
**RADIAL DOUBLE
OUTPUT**



ER-40
RATIO 1:1
6.000 RPM MAX.

MS.012.NL

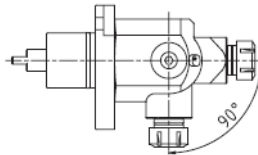
**FIXED ANGLE
(ANY ANGLE)**



ER-25
RATIO 1:1
4.000 RPM MAX.

MS.021.NL

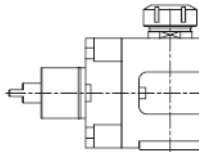
**RADIAL
ADJUSTABLE**



ER-25
RATIO 1:1
4.000 RPM MAX.

MS.051.NLA

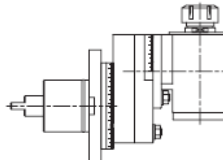
**RADIAL
SWIVELING**



ER-40
RATIO 1:1
4.000 RPM MAX.

MS.051.NLB

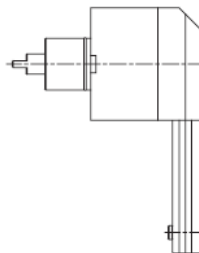
**RADIAL SPECIAL
DOUBLE
SWIVELING**



ER-25
RATIO 1:1
4.000 RPM MAX.

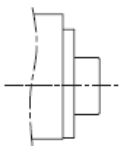
MS.040.NL

**SPECIAL FOR
INTERNAL WORKS**

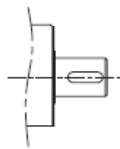


ER-11
RATIO 1:1.5
3.000 RPM MAX.

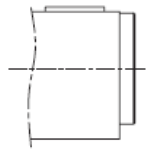
SPECIAL SPINDLE EXECUTIONS:



WELDON



**SHELL
END MILL**



CAPTO

SPECIALS: NO PROBLEM



MULTI-matic srl

VIA GIOVANNI PASCOLI,4
40036 MONZUNO BO

TEL.: +39 051 6773034

FAX.: +39 051 6771049

SITO: www.multi-maticsr.com

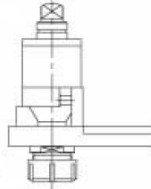
E-MAIL: commerciale@multi-maticsr.com

MORI SEIKI

SL/ZL/DL200/250MC
SL-203/204/253
SL-2500Y SL-300

MS.000.SL200
MS.000.SL300

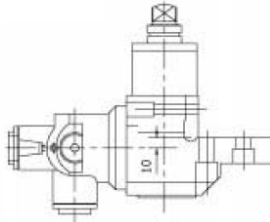
AXIAL



ER32
RATIO 1:1
4.000 RPM MAX

MS.021.SL200
MS.021.SL300

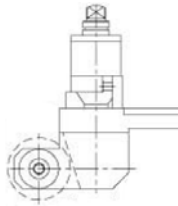
**RADIAL
ADJUSTABLE**



ER16
RATIO 1:1
4.000 RPM MAX

MS.030.SL200
MS.030.SL300

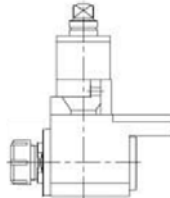
SAW-MILL



UPON REQUEST
RATIO 1:1
3.000 RPM MAX

MS.010.SL200
MS.010.SL300

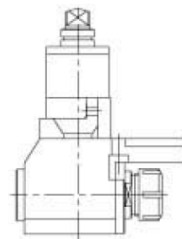
RADIAL



ER32
RATIO 1:1
4.000 RPM MAX

MS.033.SL200
MS.033.SL300

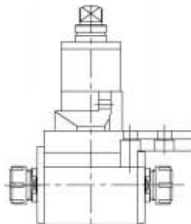
**RADIAL
SUBSPINDLE**



ER32
RATIO 1:1
4.000 RPM MAX

MS.008.SL200
MS.008.SL300

**RADIAL
DOUBLE UTPUT**



ER25
RATIO 1:1
4.000 RPM MAX



SPECIALS: NO PROBLEM



MULTI-matic srl

VIA GIOVANNI PASCOLI,4
40036 MONZUNO BO

TEL.: +39 051 6773034

FAX.: +39 051 6771049

SITO: www.multi-maticsr.com

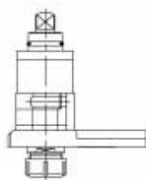
E-MAIL: commerciale@multi-maticsr.com

MORI SEIKI

SL/ZL/DL150MC
SL/153-154MC

MS.000.SL.150

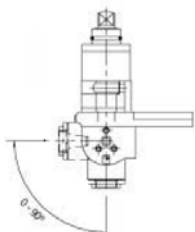
AXIAL



ER25
RATIO 1:1
6.000 RPM MAX

MS.021.SL.150

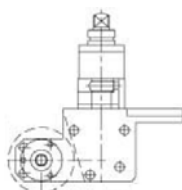
**RADIAL
ADJUSTABLE**



ER16
RATIO 1:1
6.000 RPM MAX

MS.030.SL.150

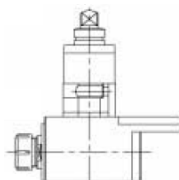
SAW-MILL



UPON REQUEST
RATIO 1:1
3.000 RPM MAX

MS.010.SL.150

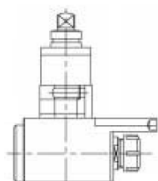
RADIAL



ER25
RATIO 1:1
6.000 RPM MAX

MS.033.SL.150

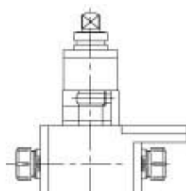
**RADIAL
SUBSPINDLE**



ER25
RATIO 1:1
6.000 RPM MAX

MS.008.SL.150

**RADIAL
DOUBLE UTPUT**



ER20
RATIO 1:1
6.000 RPM MAX



SPECIALS: NO PROBLEM



MULTI-matic srl

VIA GIOVANNI PASCOLI,4
40036 MONZUNO BO

TEL.: +39 051 6773034

FAX.: +39 051 6771049

SITO: www.multi-maticsr.com

E-MAIL: commerciale@multi-maticsr.com