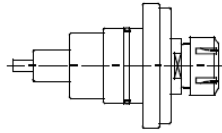


BIGLIA

B55YS / B501Y
B470SYM / B301

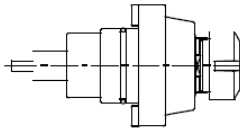
BG.000.B301 **AXIAL**



ER-25
RATIO 1:1
3.000 RPM MAX.

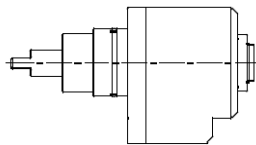


BG.000.B550 **AXIAL**



ER-32
RATIO 1:1
2.000 RPM MAX.

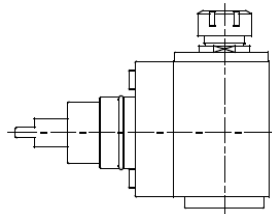
BG.003.B301 **AXIAL
REDUCER**



ER-25A
RATIO 2:1
3.500 RPM MAX.

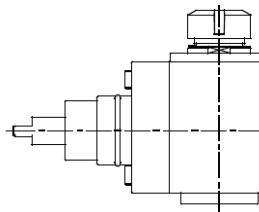


BG.010.B470A **RADIAL**



ER-25
RATIO 1:1
6.000 RPM MAX.

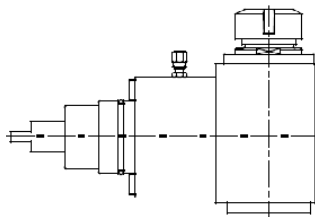
BG.010.B470B **RADIAL**



ER-32
RATIO 1:1
6.000 RPM MAX.



BG.010.B550 **RADIAL**



ER-32
RATIO 1:1
2.000 RPM MAX.



SPECIALS: NO PROBLEM



MULTI-matic srl

VIA GIOVANNI PASCOLI,4
40036 MONZUNO BO

TEL.: +39 051 6773034

FAX.: +39 051 6771049

SITO: www.multi-maticsr.com

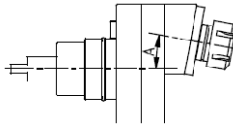
E-MAIL: commerciale@multi-maticsr.com

BIGLIA

B55YS / B501Y
B470SYM / B301

BG.012.B501

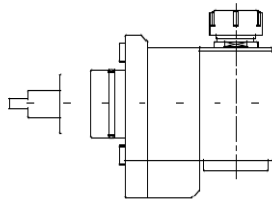
**FIXWD ANGLE
(ANY ANGLE)**



ER-25
RATIO 1:1
4.000 RPM MAX.

BG.013.B470

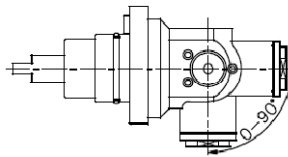
**RADIAL
SPEEDER**



ER-25
RATIO 1:3
9.000 RPM MAX.

BG.021.B501B

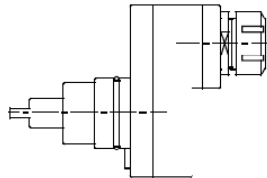
**RADIAL
ADJUSTABLE**



ER-16
RATIO 1:1
3.000 RPM MAX.

BG.027.B501

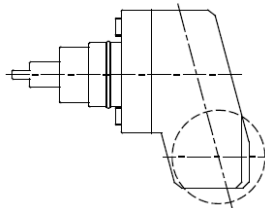
**AXIAL OFFSET
REDUCER**



ER-32
RATIO 2:1
4.000 RPM MAX.

BG.030.B470

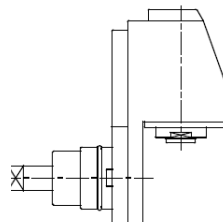
**SAW-MILL
REDUCER**



Ø22
RATIO 3:1
2.000 RPM MAX.

BG.054.B301

**WOODRUF
KEY CUTTER**



ER-20A
RATIO 1:1
3.000 RPM MAX.



SPECIALS: NO PROBLEM



MULTI-matic srl

VIA GIOVANNI PASCOLI,4
40036 MONZUNO BO

TEL.: +39 051 6773034

FAX.: +39 051 6771049

SITO: www.multi-maticsr.com

E-MAIL: commerciale@multi-maticsr.com

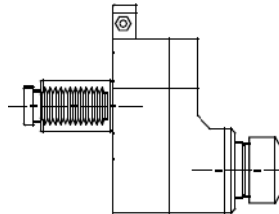


BIGLIA

B1000

BG.006.B1000

**AXIAL OFFSET
WITH HIGH
PRESSURE
COOLANT THROUGH**

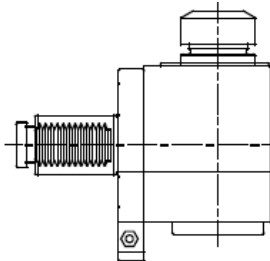


ER-32
RATIO 1:1
5.000 RPM MAX.



BG.010.B1000

RADIAL

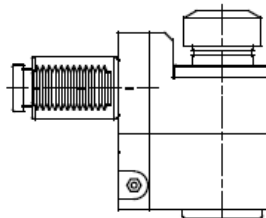


ER-32
RATIO 1:1
5.000 RPM MAX.



BG.011.B1000

**RADIAL
SET-BACK**

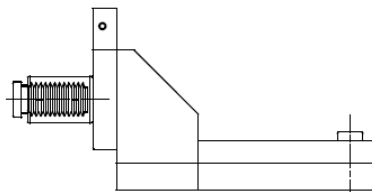


ER-32
RATIO 1:1
5.000 RPM MAX.



BG.040.B1000

**WORK INSIDE
TUBES**



ER-16
RATIO 1:2
3.000 RPM MAX.



SPECIALS: NO PROBLEM



MULTI-matic srl

VIA GIOVANNI PASCOLI,4
40036 MONZUNO BO

TEL.: +39 051 6773034

FAX.: +39 051 6771049

SITO: www.multi-maticsr.com

E-MAIL: commerciale@multi-maticsr.com

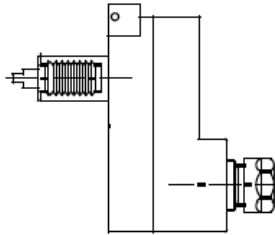


BIGLIA

B42

BG.026.B42

**AXIAL OFFSET
SPEEDER**

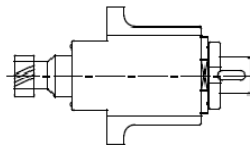


ER-20
RATIO 1:3
9.000 RPM MAX.



BG.038.B56

**AXIAL
SAW-MILL**

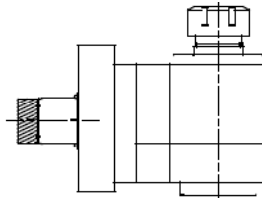


Ø27
RATIO 1:1
3.000 RPM MAX.

B56 / B501
EUROTECH 730

BG.010.B56

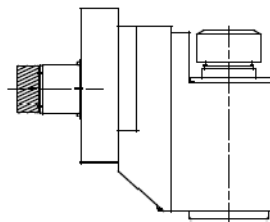
RADIAL



ER-25
RATIO 1:1
6.000 RPM MAX.

BG.011.B56

**RADIAL
SET-BACK**

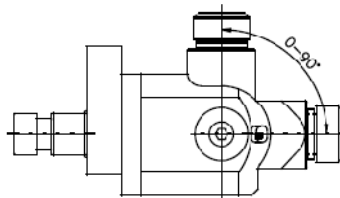


ER-25
RATIO 1:1
3.000 RPM MAX.



BG.021.B56

**RADIAL
ADJUSTABLE**



ER-25
RATIO 1:1
3.000 RPM MAX.



SPECIALS: NO PROBLEM



MULTI-matic srl

VIA GIOVANNI PASCOLI,4
40036 MONZUNO BO

TEL.: +39 051 6773034

FAX.: +39 051 6771049

SITO: www.multi-maticsr.com

E-MAIL: commerciale@multi-maticsr.com